

INSTRUCTIONS-PARTS LIST



308961G
ACCESS
LINEMARKING
EQUIPMENT



Important Safety Instructions

Read all warnings and instructions in this manual. Save these instructions.

First choice when
quality counts.™

Kit, Replacement, Drain Valve:

Model 245103, Series A

Model 24B592, Series A

4000 psi (280 bar, 28 MPa) Maximum Working Pressure

Model 24B572, Series A

1000 psi (69 bar, 6.9 MPa) Maximum Working Pressure

Pressure Relief Procedure

WARNING



SKIN INJECTION HAZARD

The system pressure must be manually relieved to prevent the system from starting or spraying accidentally. Fluid under high pressure can be injected through the skin and cause serious injury. To reduce the risk of an injury from injection, splashing fluid, or moving parts, follow the **Pressure Relief Procedure** whenever you:

- are instructed to relieve the pressure,
- stop spraying,
- check or service any of the system equipment,
- install or clean the spray tip.

1. Engage gun safety latch.
2. Turn engine or electric motor ON/OFF switch to OFF.
3. Turn pressure control switch to OFF.
4. Unplug power supply cord (electric motor only).
5. Disengage gun safety latch. Hold metal part of gun firmly to grounded metal pail. Trigger gun to relieve pressure.
6. Engage gun safety latch.
7. Open pressure drain valve. Leave pressure drain valve open until ready to spray again.

If you suspect that the spray tip or hose is completely clogged or that pressure has not been fully relieved after following the steps above, VERY SLOWLY loosen the tip guard retaining nut or hose end coupling and relieve pressure gradually, then loosen completely. Now clear the tip or hose obstruction.

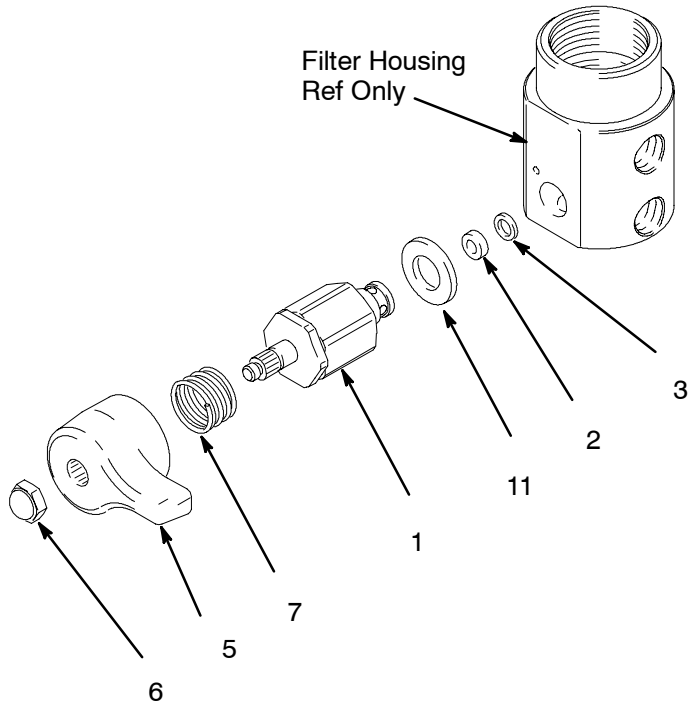
GRACO INC. P.O. BOX 1441 MINNEAPOLIS, MN 55440-1441

©COPYRIGHT 1999, GRACO INC.

Graco Inc. is registered to I.S. EN ISO 9001

Instructions

Installation



REF NO.	PART NO.	DESCRIPTION	QTY
1		VALVE	1
2	193709	SEAT, valve	1
3	193710	SEAL, valve	1
4	113500	SEALANT, thread, (not shown)	1
5	15G563	HANDLE, valve	1
5*t	15Y594	HANDLE, valve	1
6	116424	NUT, cap, hex hd	1
7	114708	SPRING, compression	1
7*	122287	SPRING, compression	1
11	114797	GASKET	1
11*	107204	GASKET	1

* Model 24B572
t Model 24B592

8842c

- Follow **Pressure Relief Procedure** on page 1.
- Remove old drain valve. See applicable sprayer manual for procedure
Note: Valve seat (2) and valve seal (3) are already installed on valve (1).
- Apply grease to valve seal (3) to keep valve seal and valve seat (2) in place during assembly.
- Apply blue thread sealant (4) to threads of valve (1).
- Thread valve (1) into filter housing of sprayer.
- Place spring (7) over over brass stem of valve (1).
- Align paddle of handle (5) with fluid hose, then push onto stem of valve (1).
- Assemble cap nut (6) to brass stem of valve (1).
- Tighten cap nut (6) to handle (5). Torque to 20 +/- 5 in-lb.

All written and visual data contained in this document reflects the latest product information available at the time of publication. Graco reserves the right to make changes at any time without notice.

Graco Headquarters: Minneapolis
International Offices: Belgium, China, Japan, Korea

GRACO INC. P.O. BOX 1441 MINNEAPOLIS, MN 55440-1441

<http://www.graco.com>

Written in USA 1/1999, Rev 05/2008