

Kits, Paint Hopper

308942F

LineLazer 3500, 5000, LineLazer II, III, IV, V, 3900, 5900, 3400, ES 1000
Airlessco SureStripe 3350/3350SP/4350, Pioneer BriteStriper 3500/3500SP

EN



Important Safety Instructions

Read all warnings and instructions in this manual. Be familiar with the controls and the proper usage of the equipment. Save these instructions.

Model 241103, Series A

LineLazer 3500, 5000

Model 241104, Series A

LineLazer II, III, IV, V 3900, 5900,
130HS, and 200HS

Model 17P444, Series A

LineLazer V 3400
LineLazer ES 1000

Model 17P698, Series A

SureStripe 3350/3350SP
BriteStriper 3500/3500SP

Model 17P699, Series A

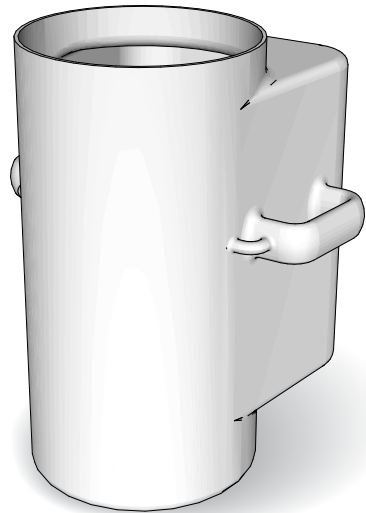
SureStriper 4350

Model 25N710, Series A

LineLazer ES 2000

Model 25N622, Series A

LineLazer 200DC, 200MMA



ti31320a

Instructions

Installation

Models 241103, 241104, 17P699

1. Remove old inlet strainer (3) from striper suction tube assembly.
2. Install pipe coupling (2) on suction tube assembly with sealant provided.
3. Attach intake tube (1) and new inlet strainer (3) to coupling with sealant provided.
4. Mount reservoir (4) onto striper.

Models 17P444, 17P698

1. Remove old suction hose and drain line assembly, and replace with new washer (15), suction hose (6), and drain line (7) assembly.
2. After inserting suction hose (6) and drain tube (9) into pail grommet, install coupling (2) and extension tube (1) using provided sealant.
3. Attach the new inlet strainer (3) to extension tube (1).
4. Mount hopper bracket (11) to frame using screws (12) and nuts (13). Torque to 23-27 ft-lb.
5. Mount reservoir (4) onto striper.

Operation

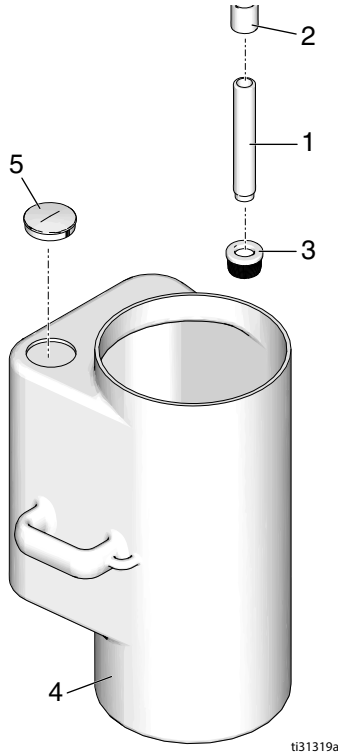
NOTICE

Do not lift large paint hopper when full. Attempting to lift when full may cause damage to paint hopper handles.

Operate striper according to normal working instructions.

Parts Drawing

Models 241103, 241104, 17P699




Parts List

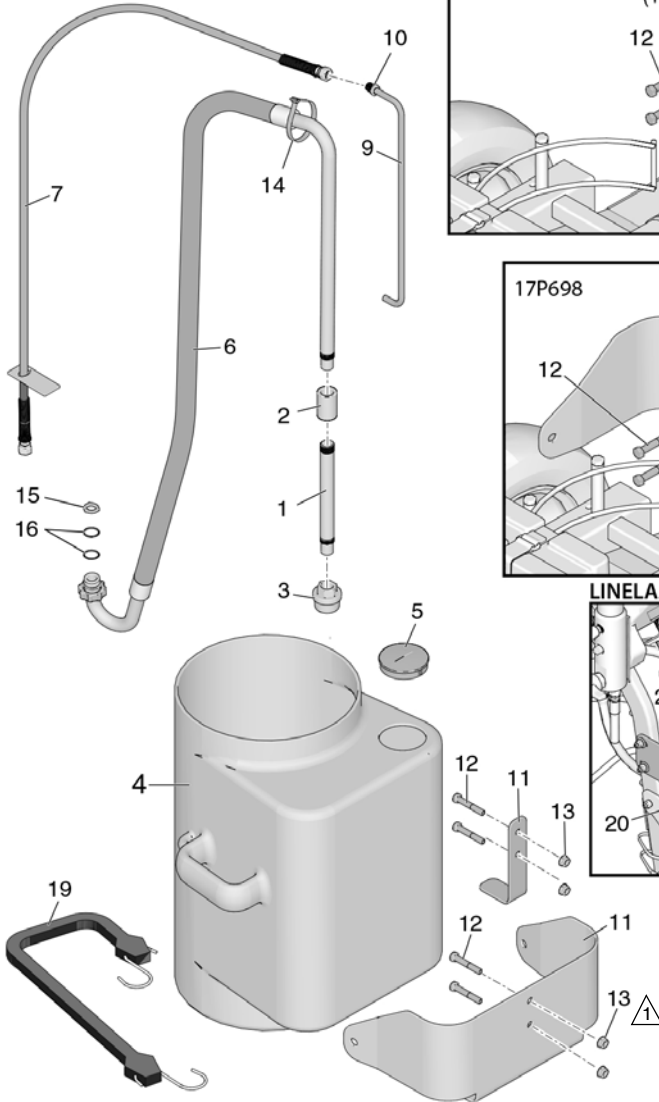
Ref.	Part	Description	Qty.
	241103	KIT ASSY, paint hopper (for LL 3500 and LL 5000)	Ref
	241104	KIT ASSY, paint hopper (for LL II, III, IV 3900 and 5900)	Ref
	17P699	KIT ASSY, paint hopper (SureStripe 4350)	Ref
1	189674	TUBE, suction, extension	1
	17N341	TUBE, suction, extension (for SureStripe 4350)	1
2	114967	COUPLING, pipe	1
	129435	COUPLING, pipe (for SureStripe 4350)	1
3	181072	STRAINER, inlet	1
	276897	STRAINER, inlet (for SureStripe 4350)	1
4		RESERVOIR (used on 241103)	1
		RESERVOIR (used on 241104 and 17P699)	1
5	127375	PLUG, 3.0" hole	1
6	119400	SEALANT, pipe	1

Instructions

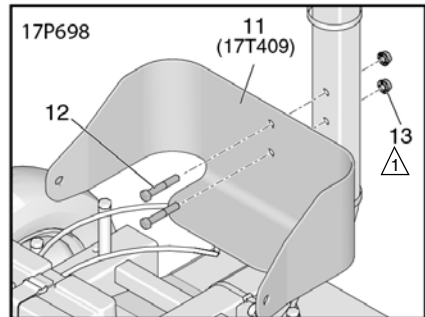
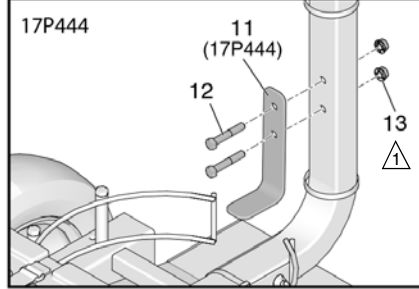
Parts Drawing

Models 17P444, 17P698

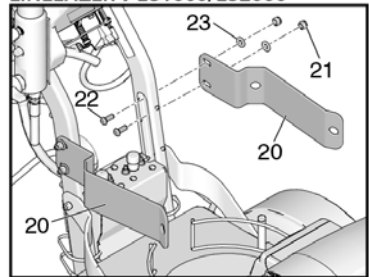
Ref.	Torque
	23-27 ft-lb (31.2 - 36.6 N•m)



LINELAZER V 3400



LINELAZER V ES1000/ES2000



t313166

Parts List

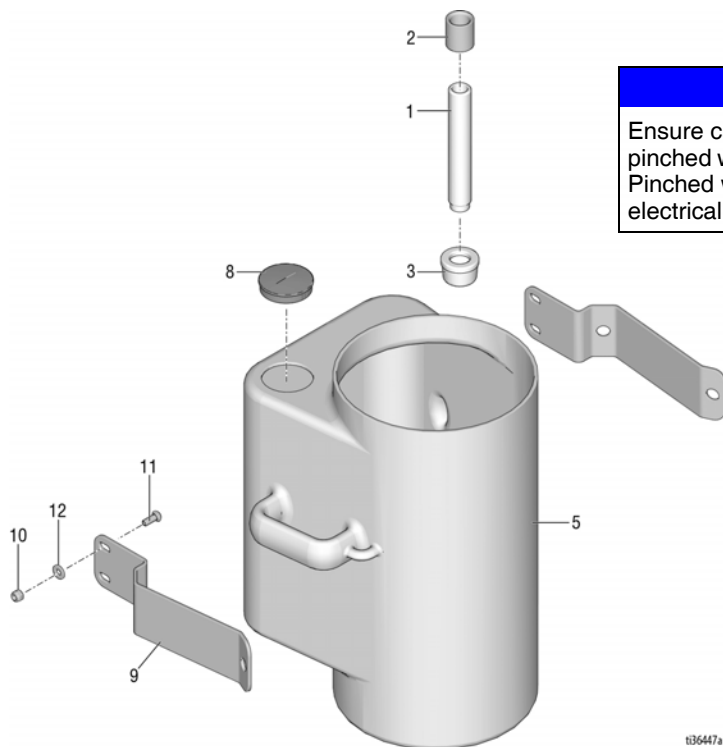
Models 17P444, 17P698

Ref. Part	Description	Qty.
1	17N431 TUBE, extension, intake	1
2	129435 COUPLING, pipe	1
3	246385 STRAINER, inlet	1
4	193713 RESERVOIR	1
5	127375 PLUG, 3.0"	1
6	17M782 HOSE	1
7	248008 HOSE, drain line (used on 17P444)	1
	17M385 HOSE, drain line (used on 17P698)	1
9	16X071 TUBE, drain line	1
10	196180 BUSHING	1
11	17N591 BRACKET, hopper (used on 17P444)	1
	17T409 BRACKET, hopper, wide (used on 17P698)	1
12	105431 SCREW, 3/8" - 16 x 2.25"	2
13	112958 NUT, hex, flanged	2
14	404989 STRAP, tie	2
15	115099 WASHER, garden house	1
16	117559 O-RING	2
17	119400 SEALANT, pipe	1
19	17T410 STRAP, tie-down, bungee (used on 17P698)	1
20	17Y728 BRACKET, hopper support	2
21	101566 NUT, lock	4
22	128977 SCREW, cap, button head	4
23	100023 WASHER, 3/8"	4

Instructions

Parts Drawing

Model 25N710

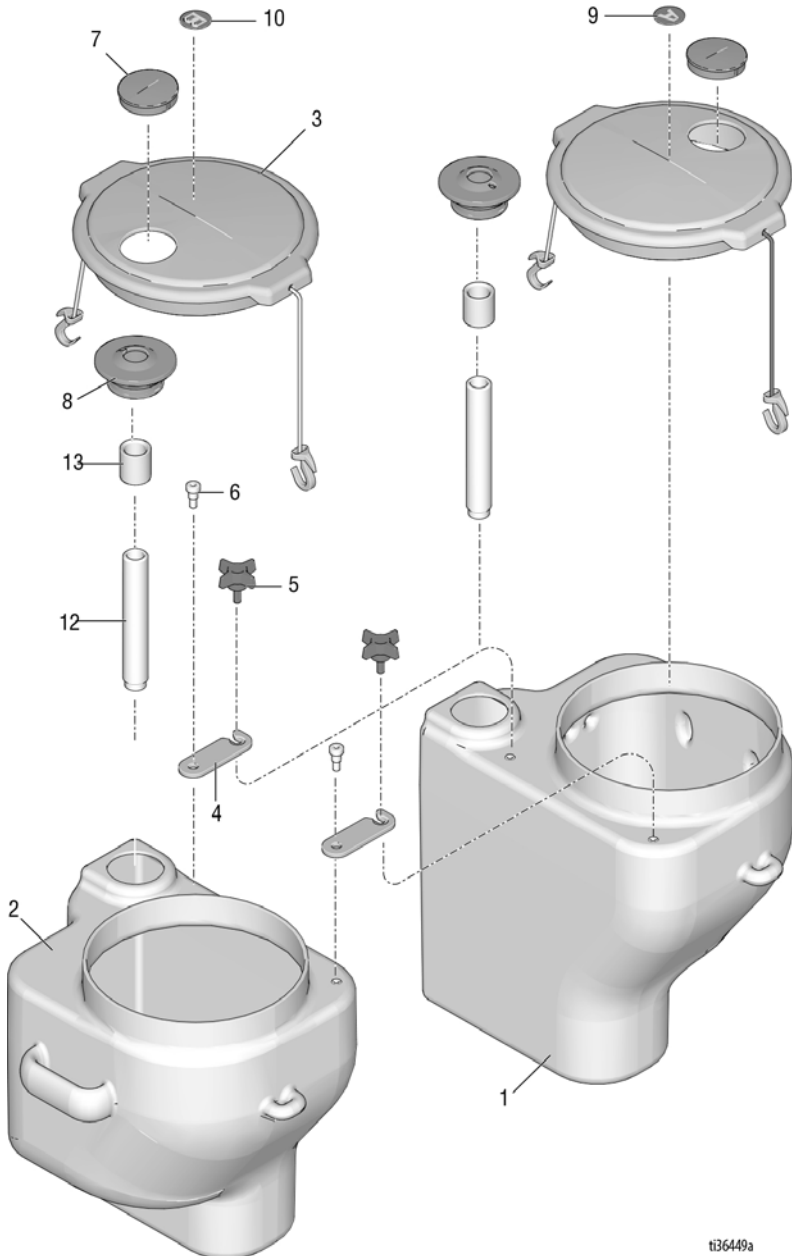


Parts List

Ref.	Part	Description	Qty.
1	189674	TUBE, intake	1
2	114967	COUPLING, pipe, 1"	1
3	187147	STRAINER, inlet	1
5	193713	RESERVOIR	1
8	127375	PLUG, 3.0"	1
9	17Y728	BRACKET, hopper	2
10	101566	NUT, lock	4
11	128977	SCREW, cap, button head	4
12	100023	WASHER, 3/8"	4

Parts Drawing

Models 25N622



ti36449a

Instructions

Parts List

Model 25N622

Ref. Part	Description	Qty.
1	17Y026 RESERVOIR, left	1
2	17Y025 RESERVOIR, right	1
3	24U241 KIT, pail cover	2
4	16X081 BRACKET, dual tank retaining	2
5	111145 KNOB, prolonged	2
6	126108 SCREW, shoulder, socket head	2
7	127375 PLUG, 3.0"	2
8	278722 GASKET, pail	2
9	17Y328 LABEL, identification, letter "A"	1
10	17Y329 LABEL, identification, letter "B"	1
12	189674 TUBE, intake	2
13	114967 COUPLING, pipe	2

Notes

Graco Information

For the latest information about Graco products, visit www.graco.com.

For patent information, see www.graco.com/patents.

TO PLACE AN ORDER, contact your Graco distributor or call 1-800-690-2894 to identify the nearest distributor.

All written and visual data contained in this document reflects the latest product information available at the time of publication.

Graco reserves the right to make changes at any time without notice.

Original instructions. This manual contains English. MM 308942

Graco Headquarters: Minneapolis

International Offices: Belgium, China, Japan, Korea

GRACO INC. AND SUBSIDIARIES • P.O. BOX 1441 • MINNEAPOLIS MN 55440-1441 • USA

Copyright 2014, Graco Inc. All Graco manufacturing locations are registered to ISO 9001.

www.graco.com
Revision F, May 2019